

WAVE JUMPER JET RIDER™

INSTRUCTION MANUAL

THANK YOU

Thank you for purchasing the Venom Wave Jumper Jet Rider™. This R/C model was designed with fun in mind. Experienced and beginning hobbyists alike will enjoy how easy the Wave Jumper Jet Rider™ is to set up and drive. We at Venom strive to create high quality, fun products and feel we have successfully achieved our goal. We hope you have as much fun with your Wave Jumper Jet Rider™ as we did creating it. Not only did you purchase a fun product but you have also joined the Venom Team and it's world class product line and customer service.

14+
yrs

! WARNING
CHOKING HAZARD - SMALL PARTS
NOT FOR CHILDREN UNDER 3 YEARS

PRECAUCIÓN: **CAUTION:**
FUNCIONA CON ELECTRIC TOY.
ELECTRICIDAD.

No recomendado para niños menores de 14 años. Al funcionar con electricidad, deben cumplirse los consejos de seguridad durante la manipulación y la utilización para evitar posibles descargas eléctricas. Se requiere la supervisión del adulto.
ENTRADA: 110-120V 60HZ4.2w

Not recommended for children under 14 years of age. As with all electric products, precautions should be observed during handling and use to prevent electric shock. Adult supervision is required.

INPUT: 110-120V 60HZ4.2w

OUTPUT: 7.2V=450MA

SOLAMENTE
SALIDA: 7.2V=450MA

SAFETY PRECAUTIONS

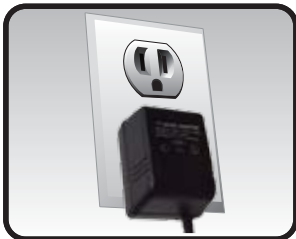
- First time modelers should seek the advice of their local hobby shop or an experienced modeler if you do not understand these instructions.
- Follow all safety precautions when operating this model to avoid personal injury or damage to persons or property.
- Children should always be supervised by an adult when building and using this product.
- Keep hands and fingers away from rotating parts such as the propellers. Failure to do so could result in serious injury.
- If batteries get hot during charging, discontinue charging immediately and disconnect battery from charger.
- Charging and discharging batteries has the potential for serious injury to persons and damage to property. Never leave battery unattended while charging. If you are unsure of how to charge this battery, please contact Venom™ or seek the advice of your local hobby shop.
- Never let children charge batteries without adult supervision.
- Never disassemble or modify the battery pack included with this kit.
- Never dispose of batteries into a fire as batteries may explode. Please dispose of batteries properly.



INFO

BATTERY CHARGING

1. PLUG IN THE CHARGER



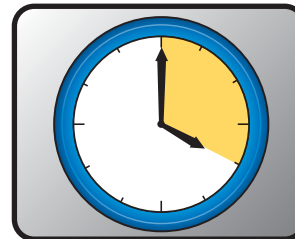
Plug the kit supplied charger into an electrical outlet.

2. CONNECT THE BATTERY TO THE CHARGER



Connect the battery to the charger. **Always remove the battery from the model when charging!**

3. CHARGE TIME



If the battery is fully discharged, it should be fully charged in about 4 hours. If the battery gets hot during charging disconnect it immediately!



DANGER

CHARGING INSTRUCTIONS NON-KIT CHARGERS (DO NOT CHARGE THE BATTERY IN THE MODEL)

Charge at 3 amps for extended life, 4 amps for improved performance. Charging at 4amps may reduce the useful life of the batteries. Must use a NiMH linear charger with peak detection. **DO NOT TRICKLE CHARGE BATTERIES.** Caution: If batteries get hot during charging, discontinue charging immediately and disconnect battery from charger. Never leave battery unattended while charging. If you are unsure of how to charge this battery, please contact Venom™ or seek the advice of your local hobby shop. Never let children charge batteries without adult supervision.

Charging and discharging batteries has the potential for serious injury to persons and damage to property. In purchasing this product, the user agrees to accept responsibility for all such risks, and will not hold Venom, it's affiliates, manufacturers, distributors, or retail partners responsible for any accident, injury to persons, or damage to property resulting from the use of this product.

RADIO PREPARATION

Follow these steps to properly set up your radio system.



INFO

1. BATTERIES



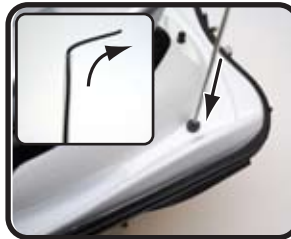
Install 8 new AA batteries.

2. TRANSMITTER ANTENNA



Install and extend the radio transmitter antenna. If the antenna is not fully extended the radio range may be reduced.

3. RECEIVER ANTENNA



Extend the receiver antenna on the model and insert it into the antenna tube.

4. INSTALL THE BATTERY



Install the fully charged 1800mah stick pack in the model.

5. TURN ON THE TRANSMITTER



Turn on the transmitter
NOTE: The transmitter is always turned on first and off last.

6. TURN ON THE RECEIVER



Turn on the receiver in the model (press the on/off button on the top of the hull located).

7. CHECK THE CONTROLS



With the model on its stand, check the control inputs. When the throttle is applied both props should turn. When the steering wheel is turned to the right, the left motor will turn and the right motor will stop. When the steering wheel is turned to the left, the right motor will turn and the left motor will stop.

8. TURN OFF THE RECEIVER AND TRANSMITTER



Turn off the receiver in the boat and then turn off the transmitter.

PRE-RUN CHECK LIST

Before you run your model.

- Check to make sure all screws are securely tightened
- Make sure the transmitter batteries are new or fully charged
- Make sure the NiMH battery is fully charged
- Make sure the NiMH battery is securely fastened inside the model
- Make sure the model and transmitter are on the same radio channel and that no other models are on the same channel
- Check the controls



INFO



WHERE TO RUN YOUR MODEL

Here are some precautions you should take when running your model.

1. FREE OF PEOPLE



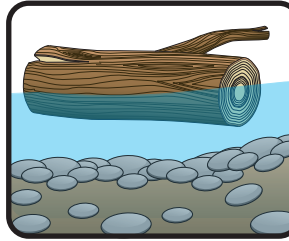
Make sure to operate your model in an area that is free of animals and people.

2. DO NOT SWIM AFTER YOUR MODEL



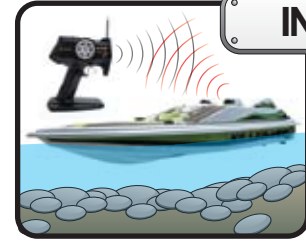
If your model becomes damaged or disabled while in use. **DO NOT SWIM** after it. Strong currents or other dangers may exist!

3. FREE OF DEBRIS



Make sure the area where you will be running your model is free of obstacles and debris.

4. FREQUENCY



Make sure no other boats are using the same radio frequency. If two models are on the same frequency, a loss of control may occur.



INFO

RUNNING THE MODEL

When you are ready to run your model.

1. INSTALL THE BATTERY AND COVER



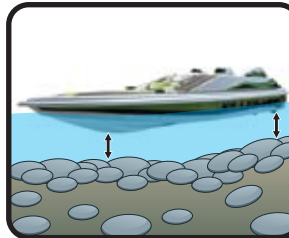
Install the fully charged 1800mah stick pack and connect to the model.

2. TURN ON THE RADIO & RECEIVER



Turn on the radio and then the receiver on the model. **NOTE: The radio is always turned on first and off last.**

3. WHERE TO RUN



Place the model in water that is deep enough to avoid hitting objects with the prop.

4. CONTROLS



Squeeze the trigger to apply the throttle and make the boat move forward. Use the steering wheel to turn the model left and right.

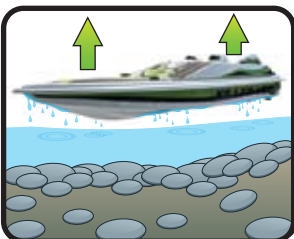


INFO

AFTER RUNNING THE MODEL

After running your model.

1. REMOVE THE BOAT



Remove the boat from the water.

2. TURN OFF THE RECEIVER



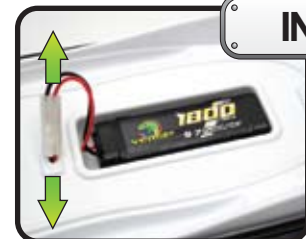
Turn off the receiver in the model (press the on/off button on the top of the hull).

3. TURN OFF THE TRANSMITTER



Turn off the transmitter **NOTE: The transmitter is always turned on first and off last.**

4. DISCONNECT THE BATTERY



Disconnect the NiMH battery and remove it from the model.



INFO

5. AFTER EVERY RUN YOU SHOULD ALWAYS FLUSH THE MODEL WITH FRESH WATER AND DRY OFF. CHECK FOR DAMAGE AND LEAKS AND OIL THE PROPELLER SHAFT TO PREVENT RUST. MAKE SURE THE PROPELLER SCREW IS TIGHT.



GUARANTEE, NOTICE OF RIGHTS, AND NOTICE OF LIABILITY TEXT

GUARANTEE:

We guarantee the Venom Wave Jumper Jet Rider™ to be free of manufacturing faults and material defects. This product has been checked and adjusted individually before leaving the manufacturer. Please contact your local hobby shop for replacement parts and technical support or contact Venom™ Customer Service at 800.705.0620 or customerservice@venom-group.com.

Copyright © 2009 by Venom™

Notice of Rights

All rights reserved. No part of this manual may be reproduced or transmitted in any form by any means, electronic, mechanical, photocopying, recording, or otherwise, without the prior written permission of Venom™. For information on getting permission for reprints and excerpts, contact customerservice@venom-group.com.

Notice of Liability

The information in this manual is distributed on an "As Is" basis, without warranty. While every precaution has been taken in the preparation of the manual Venom™ does not have any liability to any person or entity with respect to any loss or damage caused or alleged to be caused directly or indirectly by the information contained in this manual or by the products described in it.

Venom Group International

14028 N. Ohio Street
Rathdrum Idaho 83858

Australia

PO Box 7325
Alexandria NSW 2015

Customer Service

800.705.0620
customerservice@venom-group.com

WARNINGS & CAUTIONS

Adult supervision is required when using this product. This product should be assembled by an adult before use. Proper assembly should be checked by an adult before use. This product should be periodically examined by an adult for potential hazards. Any potential hazardous parts should be repaired or replaced.

This product contains chemicals known to the State of California to cause Cancer, Birth Defects and other Reproductive Harm. Be responsible, dispose of properly.

DO NOT MIX OLD AND NEW BATTERIES.

DO NOT MIX ALKALINE, STANDARD, OR RECHARGEABLE (NICKLE METAL HYDRIDE BATTERIES).

WARNING: This product may contain sharp edges or objects that can cause cuts or other bodily injury. To prevent cuts or other bodily injury, do not contact sharp edges or objects.

FCC INFORMATION

Compliance with FCC regulations (Valid in U.S. only) This device complies with part 15 FCC rules. Operation of this device is subject to the following two conditions:

1. This device may not cause harmful interference.
2. This device must accept any harmful interference that may cause undesired operation.

This device generates and uses radio frequency energy and if not used properly may cause interference to radio and television reception. It has been tested and found to comply with the limits set by the FCC which are designed to provide reasonable protection against such interference.

FCC Warning:

CAUTION: Venom™ is not responsible for any radio or TV interference caused by unauthorized modifications to this product. Changes or modifications not authorized by Venom™ will void all warranties.

NOTE: This product has been tested and found to comply with the limits for a Class B digital device, compliant to Part 15 of the FCC Rules. These limits are designed to provide reasonable protection against harmful interference in a residential installation. This product generates, uses and can radiate radio frequency energy and, if not installed and used as instructed, may cause harmful interference to radio communications. However, there is no guarantee that interference will not occur in a particular installation. If this product does cause harmful interference to radio or television reception, which can be determined by turning the product on and off, correct the interference by trying one or more of the following measures:

- Reorient or relocate the receiving antenna.
- Increase the separation between the equipment and receiver.
- Connect the equipment into an outlet on a circuit different from the receiver.
- Consult the dealer or an experienced radio/TV technician for help.

LIMITED WARRANTY

Venom™ Limited Warranty

Venom™ warrants this product to be free of material and workmanship defects when new. If a component is defective or was not correctly made, Venom™ will, at its sole discretion, repair or replace it free of charge within 90 days from date of purchase. If you believe a defect became evident only after operation, please contact us to discuss your warranty claim.

A dated & itemized sales receipt must accompany any product returned for warranty work. Before returning any product, please contact Venom™ Customer Service at 800-705-0620 to receive a Return Merchandise Authorization Number (RMA#).

